

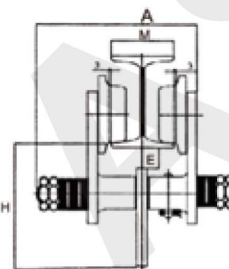
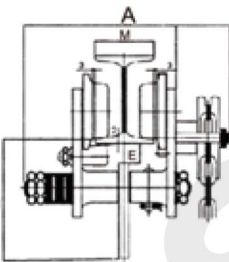
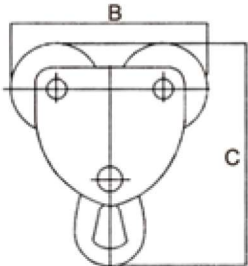
Safety Trolley

Model:SMT/AP



1. Extremely easy work-site installation.
2. Compatible with I-beam and H-beam rail.
3. High quality sealed ball bearings.
4. Can be supplied with anti-drop plates and anti-tilt device.
5. Easily travels over minor rail surface irregularities.
6. For geared trolley, the standard operating chain length is 3m, other length is available upon request.

Model:SMT/AG



PLAIN TROLLEY SMT/AP SERIES SPECIFICATION

Model	Capacity (Ton)	Compatible Rail Size(mm)				Dimensions(mm)							Min. Rotation Radius (mm)	N/W (kg)
		Width(W)		Height(H)		A	B	C	D Φ	E Φ	F	K		
		Min.	Max.	Min.	Max.									
SMT/AP-0050.0000	0.5	75	125	100	150	206	174	120	45	55	27	-	900	6.0
SMT/AP-0100.0000	1	75	125	125	250	206	231	120	45	80	27	-	1300	10.0
SMT/AP-0200.0000	2	100	150	150	400	241	271	155	60	100	33	-	1500	18.5
SMT/AP-0300.0000	3	100	150	180	400	261	311	185	70	113	47	-	2000	26.0
SMT/AP-0500.0000	5	125	175	250	450	294	351	220	80	125	53	-	2600	44.0
SMT/AP-1000.0000	10	150	175	250	450	294	721	165	-	125	53	-	-	96.0

GEARED TROLLEY SMT/AG SERIES SPECIFICATION

Model	Capacity (Ton)	Compatible Rail Size(mm)				Dimensions(mm)							Min. Rotation Radius (mm)	N/W (kg)
		Width(W)		Height(H)		A	B	C	D Φ	E Φ	F	K		
		Min.	Max.	Min.	Max.									
SMT/AG-0050.0300	1	75	125	125	250	206	231	120	45	80	27	117	1300	14.0
SMT/AG-0100.0300	2	100	150	150	400	241	271	155	60	100	33	119	1500	23.5
SMT/AG-0300.0300	3	100	150	180	400	261	311	185	70	113	47	134	2000	33.5
SMT/AG-0500.0300	5	125	175	250	450	294	351	220	80	125	53	134	2600	53.5
SMT/AG-1000.0300	10	150	175	250	450	294	721	165	-	125	53	134	-	101.0

Adjusting the Trolley for the Rail Size

Load Capacity (t)	Washer Combination Category Corresponding to Tail Width(W) (mm)(See drawings below.)								
	A	B	C	D	E	F	G	H	I
0.5	75	81.3	87.5	93.8	100	106.3	112.5	118.8	125
1	75	81.3	87.5	93.8	100	106.3	112.5	118.8	125
2	100	106.3	112.5	118.8	125	131.3	137.5	143.8	150
3	100	106.3	112.5	118.8	125	131.3	137.5	143.8	150
5	125	131.3	137.5	143.8	150	156.3	162.5	168.8	175
10	150	156.3	162.5	168.8					175